

**Vertex** Dental



# Premium Denture Solutions

Products and Academy



*Premium Denture Solutions*



# Vertex™ Dental

## Over 75 years of Dental Excellence



**The global dental technical market is changing day by day. The latest state-of-the-art denture techniques are far more advanced than those available only a short time ago. Research, developments and innovations are continuing at full speed.**

Vertex-Dental is at the forefront of this dynamic movement. We are constantly developing, producing and launching innovative products and techniques. Our main focus is on the denture department and our main aim is to offer you premium denture solutions that you can rely on for a superb fit and excellent performance.



To provide you with the best and most up-to-date solutions, we anticipate new trends in the dental technical field and create the products that professionals and patients alike are looking for.

We use our specialist capabilities and independent structure to ensure you benefit from production efficiency, environmentally responsible materials, more durable end products and cost reductions – including for end users.



At Vertex-Dental, we go out of our way to offer you better alternatives to established techniques. Our worldwide network of master technicians, specialist chemists and marketing experts is constantly on the lookout for improvements to the products and services that we offer.

Yours faithfully

Vertex-Dental Team

# Content



Page

<b>Products</b>	Vertex™ ThermoSens	6
	Acrylic Teeth	8
	Heat-Curing acrylics	9
	Cold-Curing acrylics	10
	Casting System	12
	Machineries	13
	Bonding & Staining	14
	Separation fluid	14
	Silicones	14
	Baseplates & waxes	15
	Light Curing Trayplates	15
	Rotary Instruments	16
	Hygienic & packing Assortment	16
	Polishing Assortment	17
	High Gloss Assortment	18
Premium Accessories	19	
<hr/>		
<b>Academy</b>	Vertex-Dental Academy	22
	Vertex™ ThermoSens	23

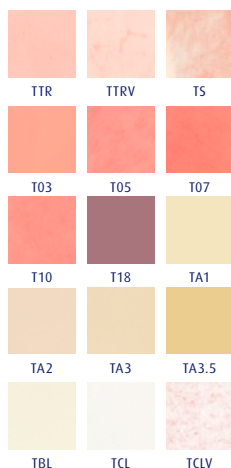
## Vertex™ ThermoSens



## Advantages of Vertex™ ThermoSens

- Virtually unbreakable
- Low allergy risk
- No volume shrinkage
- Repairs are possible
- Available in 15 colours
- Easy and quick to polish
- Good humidity resistance
- Rebasing & relining possible

## Vertex™ ThermoSens



Vertex™ ThermoSens is the innovative, virtually unbreakable, new monomer-free rigid denture base material from Vertex-Dental B.V.

Vertex™ ThermoSens is monomer free and therefore ideally suited to patients unwilling or unable to accept dentures made from materials that could result in allergic reactions or other sensitivity problems.

Vertex™ ThermoSens is virtually unbreakable, and provides an excellent fit due to the lack of volume shrinkage.

Vertex™ ThermoSens is suitable for full and partial dentures. It can be used for rebase and reline jobs, and is also suitable for creating overdentures on implants. Though it is even possible to make repairs too! It is available in 15 colours.

Vertex™ ThermoSens is also easy and quick to polish.

## Vertex™ ThermoSens



Available in medium, large and extra large cartridges, packed per 12.

- Available in Ø22 mm
- Available in Ø25 mm
- Also available as bulk granulate for filling cartridges
- Empty cartridges available

## Vertex™ ThermoFlask



Key included.

22 mm and 25 mm

## Vertex™ Thermoject 22



The Vertex™ Thermoject 22 is the injection machine which enables dental technicians to inject easily, efficiently and quickly. In only 8 minutes the temperature will reach 290°C. The heating of the cartridge and the actual injection material is fully automated.

Suitable for Ø22 mm cartridges  
Available in 100V, 110V and 230V

## Vertex™ Sprue Wax Soft



Special wax to enable you to create better injection channels.

4,5 mm  
9,5 mm

## Vertex™ ThermoFlow



Separation liquid for plaster versus Vertex™ ThermoSens.

## Vertex™ ThermoGloss Paste



High-gloss paste for finishing Vertex™ ThermoSens.

## Vertex™ ThermoGloss Emulsion



Emulsion for finishing Vertex™ ThermoSens.

## Vertex™ Thermo Fusing liquid



Liquid for repairing, relining and rebasing

## Vertex™ Thermo Silicon Polisher



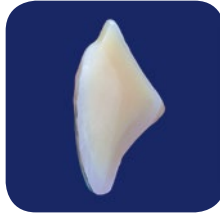
For polishing the surface and the edges.

## Vertex™ Drill & Bur



To create small holes in the teeth. 0.9 or 1.3 mm.

## Vertex™ Quint teeth



## Advantages of the Vertex™ teeth Quint

- Excellent bonding characteristics with Vertex™ Denture Base Acrylics
- Wide range of models
- Available in A1 until D4 colour classification
- Innovative 5 layer concept
- Easy to grind with cervical consistent color ceramic effect
- Double cross linked and a high molecular weight

## Vertex™ TCA



Vertex™ TCA is a cold-curing teeth coloured acrylic, which can be used for restorations to dentures and frames where an element must be renewed, repaired or permanently fixed.

- Available in 9 different shades:  
A2, A3, A3.5, B2, B3, C2, C3, D2, D3

*Vertex™ TCA can be used as well as temporary crown made by Dental technicians.*



# Vertex™ Heat-Curing acrylics



## Vertex™ Heat-Curing acrylics

### Heat-Curing acrylics indications

Denture base acrylics  
High Impact acrylic  
Relining acrylic

## Vertex™ Rapid Simplified



Vertex™ Rapid Simplified is a heat-curing denture base material and forms a solid base for full and partial dentures.

Flask to be put in boiling water for 20 min

## Vertex™ Regular & Regular Crystal Clear



Vertex™ Regular is a conventional heat-curing denture base material and forms a solid base of full and partial dentures.

Flask to be put in cold water  
Increase temperature to 100°C then a 30 min polymerisation cycle

Also available in Regular Crystal Clear for models.

## Vertex™ Implacryl



Vertex™ Implacryl is a heat-curing extra strong denture base material developed for the production of full and partial dentures and in particular for over-dentures on implants. Using high impact acrylic in implant work prevents breaking of dentures which can occur due to the lack of space.

2 hrs polymerisation  
1½ hours at 70°C  
30 minutes at 100°C

## Vertex™ Soft



Vertex™ Soft is a flexible denture soft lining acrylic (heat curing). Vertex™ Soft has an excellent adhesion to both new and existing dentures. Vertex™ Soft is for temporary use. To be applied on a heat cure basis.

2 hrs polymerisation  
1½ hours at 70°C  
30 minutes at 100°C

## Vertex™ Cold-Curing acrylics

### Cold-Curing for full & partial denture acrylics indications

Full and partial dentures  
Finishing of framework  
Repair, relining and rebasing of dentures  
Extensions to dentures

### Vertex™ Castavaria



Vertex™ Castavaria is a multifunctional self polymerizing acrylic which is perfectly useable as a pouring, relining, rebasing and as a repair acrylic.

The advantages of this acrylic are:  
Minimized shrinkage  
Colour stable in the long run  
Long pourable

### Vertex™ Castaquick



Vertex™ Castaquick provides more rapid settings, forms dough more quickly and is very suitable for adding artificial elements. Castaquick is only powder which must be used with the Castavaria liquid. For rebasing/re-lining dentures which are made by Castavaria and Castapress, Castaquick must be used.

### Vertex™ Castapress



Vertex™ Castapress is a self polymerizing pouring/casting type denture base material also suitable for repair, relining, rebasing and extensions of partial dentures.

### Vertex™ Trayplast



Vertex™ Trayplast is a self polymerizing acrylic for individual impression trays. This acrylic can be polymerized in 10 minutes using a pressure vessel.

Available in 5 shades:  
white, yellow, green, ivory and blue.

## Vertex™ Orthoplast



Vertex™ Orthoplast is a self polymerizing acrylic for orthodontic appliances. Its unique grain structure makes this acrylic suitable for the spray-on technique.

Extensive range of colours (18) incorporated in the liquid  
250ml bottles available

## Vertex™ Self-Curing



Vertex™ Self-Curing is self polymerizing and is suitable both for repair and relining of full and partial dentures.

Suitable for extensions to dentures  
Can be polymerized in 10 minutes using a pressure vessel

## Vertex™ Self-Curing Quick set



Vertex™ Self-Curing Quick Set provides more rapid settings, forms dough more quickly and is very suitable for adding artificial elements. Quick Set is only powder which must be used with the Self-Curing liquid.

## Vertex™ Implacryl Cold



Vertex™ Implacryl Cold is a cold-curing extra strong denture base material developed for relining and extensions of dentures.

## Vertex™ Castagel Clear & Blue



Vertex™ Castagel can be used in combination with Vertex™ Castavaria or Vertex™ Castapress pouring technique for full or partial denture. With this system you use gel instead of plaster.

## Vertex™ Castaflask



Using the Vertex™ Castaflask in combination with Vertex™ Castagel clear it is easy to control the whole process due to the transparency of the flask and the gel.

## Vertex™ Canal cutters



The Vertex™ Canal cutter must be used in order to create pouring and ventilation channels in the gel.

## Vertex™ Teeth holder



The Vertex™ Teeth holder is designed to release the wax from the teeth easily. Two types of teeth holders are available:

Vertex™ Teeth holder Metal



Vertex™ Teeth holder Plastic

## Vertex™ Thermoject 22



The Vertex™ Thermoject 22 is the injection machine which enables dental technicians to inject easily, efficiently and quickly. In only 8 minutes the temperature will reach 290°C. The heating of the cartridge and the actual injection material is fully automated.

Suitable for Ø22 mm cartridges  
Available in 100V, 110V and 230V

## Vertex™ PolyCure 25



The Vertex™ PolyCure 25 has an adjustable water level, fixed pressure of 2,5 bar and a constant water temperature of 55 degrees Celsius. With this pressure vessel you are able to polymerize up to 9 Vertex™ Castafasks in one run!

## Vertex™ MultiCure



20 cm x 22 cm = size of the chamber  
0° - 100°  
0 - 6 bar  
0 - 12 hrs  
Water release valve

## Vertex™ GelMelt 8



This full-automatic gel melting machine has an 8 litre tank. By making use of microprocessor technology, very precise values can be realised.

## Vertex™ Eco Light Box



The Vertex™ Eco LightBox has a detachable tray with a black out front. A simple switch can be set at 5 or 10 minutes curing time for Light Curing Trayplates.

# Vertex™ Bonding & Staining

## Vertex™ Separation fluid - Vertex™ Silicones



### Vertex™ Acrylic Stain



Vertex™ Acrylic Stain is used to give an individual colour characterisation to full and partial dentures. This acrylic is suitable for use in combination with all denture base liquids for the pressing technique and the pouring technique.

Available in 5 shades:  
210 Bleached pink  
220 Pale pink  
230 Pink  
240 Purple  
250 Brown

### Vertex™ Acrybond



Vertex™ Acrybond creates a chemical bonding between denture base acrylics and acrylic teeth.

### Vertex™ Divosep



Vertex™ Divosep is an alginate based separation solution.

Apply Divosep on wet models  
Separating plaster from denture base material  
Separating plaster from plaster

### Vertex™ Putty 1:1



Vertex™ Putty 1:1 with a Shore A value of 85 after setting. Putty 1:1 is suitable for moulds, fixing keys, provisional models etc.

Is form stable  
Heat resistant till 300°C  
Excellent reproduction of details  
Hard in three minutes

### Vertex™ Castasil 21



Vertex™ Castasil 21 is a pour type of silicone meant for duplication of models.

# Vertex™ Baseplates & waxes

## Vertex™ Light Curing Trayplates



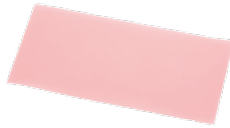
### Vertex™ Baseplates



For the production of temporary base plates.

Thickness 1.3 mm (upper and lower)  
Packaging size: 100 plates per box

### Vertex™ Modelling wax



Vertex™ Modelling wax regular is a pink, approximately 1.6 mm thick made of dental wax.

These plates have dimensions of about 18.8 x 8.9 cm. For use also in tropical regions we have extra hard wax available as well.

Packaging: 1000g / 46 wax plates

### Vertex™ Preformed wax rims



Preformed wax rims:

Red hard (100pcs)  
Pink medium (100pcs)

### Vertex™ Light Curing Trayplates



Vertex™ Light Curing Trayplates with minimal residual layer after polymerisation makes processing easy.

Each box contains 50 trays  
Available in blue, pink and clear

# Vertex™ Rotary Instruments

## Vertex™ Hygienic & packing Assortment



### Vertex™ Silicone Polishers



Vertex™ Silicone polishers creates glossy end results. Three types are available: coarse grit, fine grit and gloss grit in different shapes.

FVROT0001 Vertex™ Acrylic polisher dark blue  
FVROT0002 Vertex™ Acrylic polisher light blue  
FVROT0003 Vertex™ Acrylic polisher yellow

### Vertex™ Hard Metal Cutter



Vertex-Dental offers to technicians a hard metal cutter by which dentures can be grinded.

FVROT0004 Vertex™ Carbide bur coarse

### Vertex™ Teeth grinder



The special synthetic teeth grinder is specially meant to enlarge the contact surface of resin teeth by which a better bonding with denture base resins can be realised.

FVROT0010 Vertex™ Teeth grinder

### Hygienic & packing Assortment



Before returning the denture back to the dentist/ patient, spray on Maxil, put the denture in a denture bag and then send the denture away.

Maxil  
Denture bags

# Vertex™ Polishing Assortment



## Vertex™ Polishing brushes



- FVPOL0001 Ø 80mm polishing brush Straight 4 rows
- FVPOL0002 Ø 80mm polishing brush black Chungking
- FVPOL0020 Ø 80mm polishing brush with Zeta micro fiber
- FVPOL0003 Ø 44mm polishing brush 1 row
- FVPOL0018 Toothed brush

## Vertex™ Scotch-Brite® brushes



- FVPOL0004 Ø 80mm Scotch-Brite® brush
- FVPOL0019 Ø 80mm Scotch-Brite® brush with Zeta micro fiber
- FVPOL0005 Ø 55mm Scotch-Brite® brush
- FVPOL0006 Ø 45mm Scotch-Brite® brush
- FVPOL0010 Vertex™ Pumice Plus polishing paste
- Vertex™ Pumice Plus is meant pre-polishing for polishing without water. Vertex™ Pumice Plus must be used in combination with the Vertex™ Scotch Brite brushes.

## Vertex™ Scotch-Brite® grinding brushes



- FVSIL0005 Scotch-Brite® grinding brush rough (brown)
- FVPOL0015 Scotch-Brite® grinding brush rough (grey)
- FVPOL0016 Scotch-Brite® grinding brush medium (purple)
- FVPOL0017 Scotch-Brite® grinding brush fine (gold)

# Vertex™ High Gloss Assortment



## Vertex™ Gloss brushes



A clean way of high gloss polishing without dust and loose wires coming out of the brushes during use, is possible with the long-life high polishing brushes from Vertex-Dental. Using these brushes with Vertex™ Gloss Paste will give excellent results.

FVPOL0011 Ø 100mm Polishing zeta microfiber  
15 ply's  
FVPOL0013 Ø 100mm Felt cloth 6 ply's

## Vertex™ L.C. Gloss varnish



Vertex™ L.C. Gloss Varnish is specially developed light curing varnish for the use on acrylics PMMA & MMA's. L.C Gloss varnish provides a high shining finish to acrylic areas that are hard to polish.

Easy application, quick cure  
Excellent bonding to hard acrylics

## Vertex™ High Gloss polishing paste



A clean way of polishing without dust and loose wires coming out of the brushes during use, is possible with the long-life high polishing brushes from Vertex-Dental. Using these brushes with Vertex™ Gloss Paste will give excellent results.



---

## Vertex™ Alma Gauge



The Vertex™ Alma Gauge is an accurate measuring instrument designed to assist the dentist and the dental laboratory in the production and rebasing of full and partial dentures. The Vertex™ Alma Gauge accurately records the bite height and the position of the elements in the existing denture. The sleeves provide protection and serve as a means of communication between the dental laboratory and the dentist.

- High accuracy
- Better and more rapid communication between the dentist and the dental laboratory
- Time saving
- Simple to use

---

## Vertex™ Mixing cup Powder



With the mixing cup for powder, it is possible to work with the correct mixing ratio's easier.

## Vertex™ Thermometer



The covered thermometer can be mostly used for checking the Castagel's exact temperature before filling the flask.

## Vertex™ Divosheet



Vertex™ Divosheet is a highly flexible polyethylene sheet to be used in the trial pressing and to be used with Vertex™ Soft method.

Per box 1000 sheets.

## Vertex™ Rebase clasp



The Vertex™ Rebase clasp is made of aluminium which makes this clasp light and durable. A 90° construction with straight angles to control the rebasing process.

## Vertex™ Metal Flasks Upper/lower/visé



Specially designed with the purpose to fit perfectly in the Vertex™ MultiCure chamber (total 4 flasks with 2 clasps).

## Vertex™ Waxknife



Blue waxknife with Vertex™ inscription.

## Vertex™ Shade guides



Shade Guide Vertex™ hot & cold polymerising acrylics  
Shade guide for hot & cold polymerising acrylics



Shade Guide Vertex™ Orthoplast  
Shade guide for Orthoplast colors



Shade Guide Vertex™ Quint  
The Vertex™ Quint shade guide shows the real life 16 available shades from A1 – D4



Shade guide Vertex™ ThermoSens  
Shade guide for ThermoSens available in 15 different colors

## Vertex™ Spray-on Bottles



The perfect accessories for powder and liquid distribution. With the spray-on bottles, powder and liquid can be used in a very precise way. Highly recommended when Vertex™ Orthoplast and Acrylic Stain will be applied. The PE-bottles are monomer resistant for long life assurance.

**The Vertex-Dental Academy is acquiring increasing renown as an institute for education and further training, both nationally and internationally. Given that the process of making a denture consists of various essential parts, it is important that each aspect receives the attention it deserves. After all, the longer the chain of procedures within a process, the more likely unexpected problems become.**

## Courses

One of the principles in the Vertex-Dental Academy is the emphasis on fixed procedures. These are the initial requirements for processing high-quality materials in the denture department of a dental laboratory. Our courses therefore stress the how and why of stable polymerisation, keeping them malleable longer and keeping them capable of being casted for a longer period of time.



## Master classes

At first a number of processes which take place in the denture department of a dental laboratory have been defined. These processes have been lead to the following practical master class course:

Vertex™ ThermoSens

**For more information: [info@vertex-dental.com](mailto:info@vertex-dental.com)**

**Vertex-Dental is continuously working on innovations on materials. One of the latest materials that we have developed is Vertex™ ThermoSens. This material is a polyamide and can be used e.g. on patients with a monomer allergy. It can be used for partial dentures or for full dentures. The combinations are numerous. During this course you will make a partial denture and will learn all the tricks and possibilities.**



---

**Why Vertex™ ThermoSens?**

- Monomer free / non allergic
- Shrinkage < 1%
- Unbreakable characteristics
- Easy to polish and finish
- No dangerous goods
- For all type of dentures

---

**Course topics**

The course covers the following steps: preparing the teeth, setting up the partial denture, embedding the denture, cleaning the model and the teeth and finally inject. The following steps are also covered, finishing and polishing.

---

**Purpose**

We will demonstrate that this material can be a welcome addition to your current work. If implemented properly you will be able to see all the benefits of Vertex™ ThermoSens.

---

**Meant for**

This course is designed for the denture department, the responsible dental technicians and all denturist.

---

**For more information: [info@vertex-dental.com](mailto:info@vertex-dental.com)**



# Vertex Dental

## Vertex-Dental B.V.

Johan van Oldenbarneveltlaan 62 | 3705 HJ Zeist  
P.O. Box 10 | 3700 AA Zeist | The Netherlands  
Tel. +31 (0)30-69 76 749 | Fax +31 (0)30-69 55 188  
[info@vertex-dental.com](mailto:info@vertex-dental.com) | [www.vertex-dental.com](http://www.vertex-dental.com)



DENTAL **TOTAL**

## Dental Total, S.L

Santo Domingo, 56 local | 28917 La Fortuna - Leganes  
Madrid | España  
Tel.+91 6101601 | [info@dentaltotal.es](mailto:info@dentaltotal.es) | [www.dentaltotal.es](http://www.dentaltotal.es)